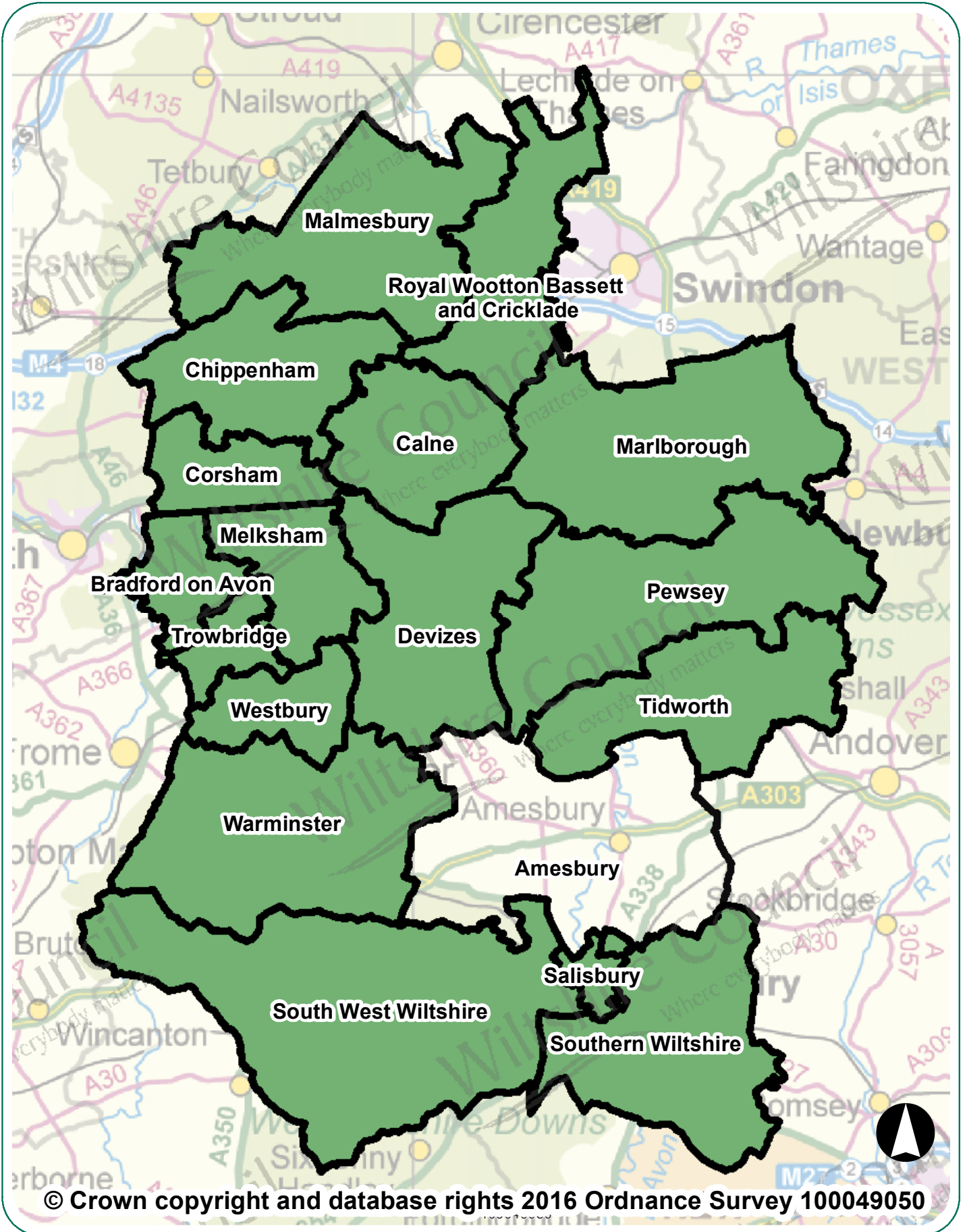


Amesbury Area Board Highway Information



Amesbury Area Board Highway Information

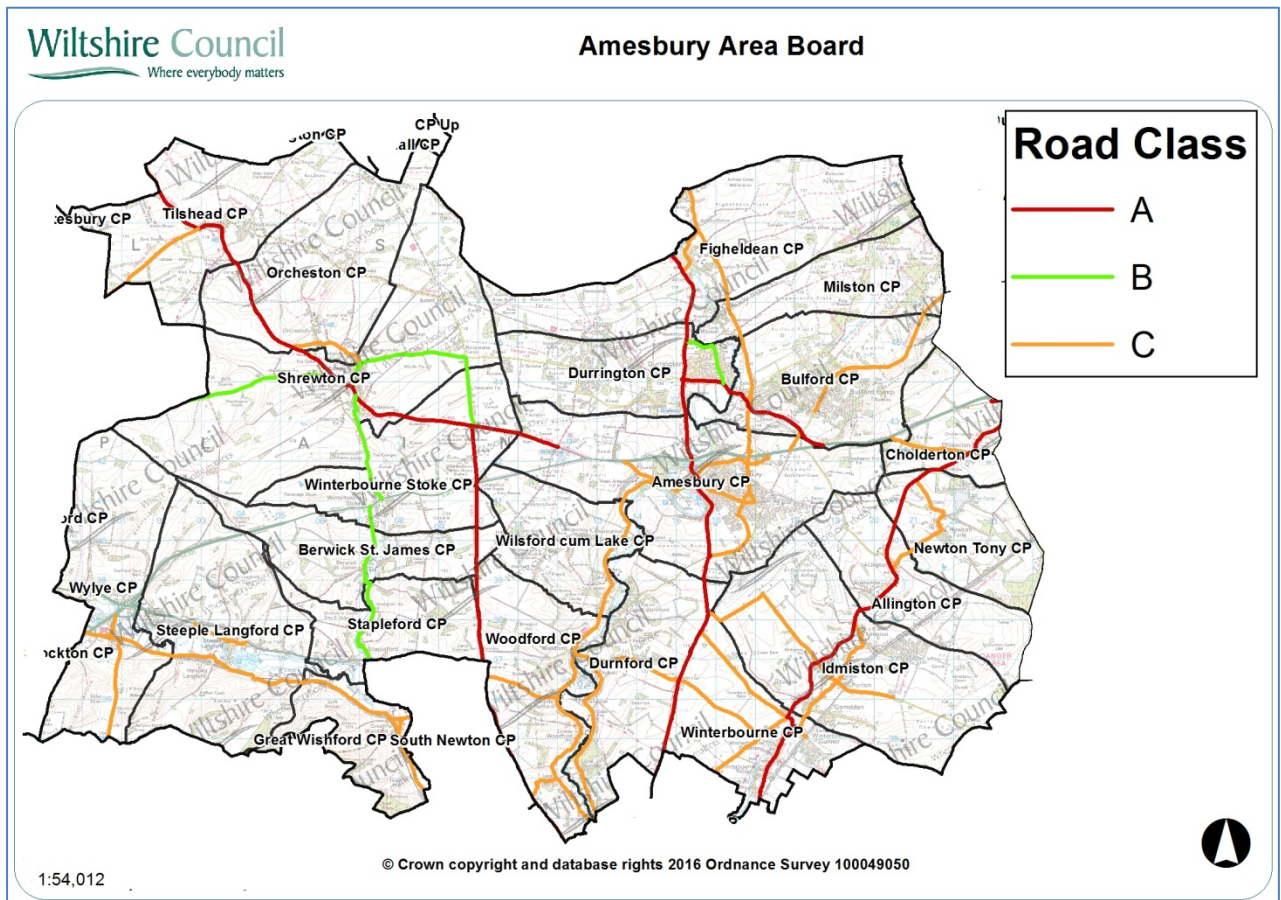
Introduction

This document summarises highway information for your area board. It lists the recent highway and related work carried out by Wiltshire Council, including the road resurfacing carried out during the first two years of the 'Local Highways Investment Fund 2014 – 2020', and includes other information which should be of interest.

Further information on the Council's activities is available at the website www.wiltshire.gov.uk. If you wish to report a specific highway issue please use My Wiltshire. Details are provided at the end of this document.

Parishes in the community area are:

Amesbury, Wilsford cum Lake, Woodford, Durnford, Tilshead, Orcheston, Shrewton, Cholderton, Winterbourne, Idmiston, Allington, Berwick St James, Newton Tony, Figheidean, Milston, Durrington, Bulford, Great Wishford, Stapleford, Steeple Langford, Winterbourne Stoke, Wylve



Network statistics in your area

Road length by class

Road type	Urban (km)	Rural (km)
A Class Roads	14.63	40.37
B Class Roads	5.98	12.87
C Class Roads	31.85	60.18
Unclassified Roads	65.98	35.85
Total	118.44	149.27
	Overall Total	267.7

The council categorises its roads to reflect their importance. This enables an effective assignment of highway inspection frequencies and maintenance standards.

Highway assets in your area

The council keeps an inventory of its highway assets in order to assist planning its highway maintenance. Important statistics relating to your board area are:

Asset Type	Measure
Carriageway	267.7 km
Footways adjacent to road	117 km
Footways (linked)	9.6 km
White road centre lines	154 km
Road kerbs	158 km
Grass verge (maintained)	406 km
Drainage grips	1785
Drainage pipe grips	119
Drainage gullies	4342
Road signs	2554
Street lights	3176

Major highway maintenance

Road resurfacing

Wiltshire has over 3,000 miles of road. The Council's 'Local Highways Investment Fund 2014 – 2020' is making a massive investment to improve the condition of the roads in Wiltshire over six years. The programme of work started in April 2014, and is designed and supervised by the Council's consultants Atkins, with the work carried out by our main highway contractors Tarmac and Eurovia.

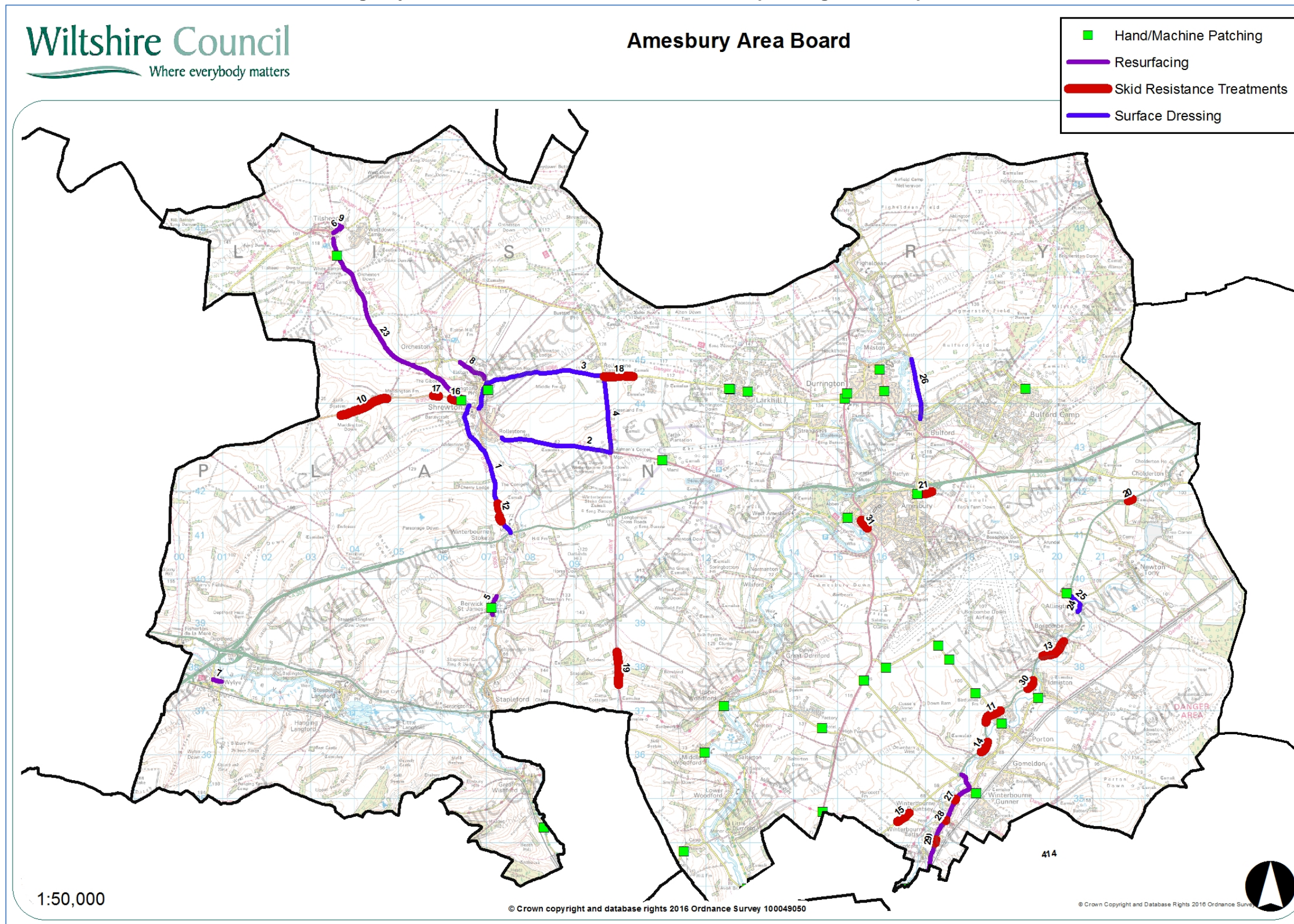
The work carried out in the first two years of the programme has improved a considerable number of the roads in previously poor condition. The locations of sites treated in recent years are shown below.

Carriageway repairs

As well as resurfacing roads other works are undertaken to make localised repairs to keep the roads safe. The works undertaken in your area since 2014 are shown on the map below.

The wet winter and flooding in previous years has resulted in substantial damage to the road network. It is important that serious defects are treated promptly to keep the roads safe. The Council currently operates four Pothole teams that respond to urgent issues to keep the roads safe.

Plan showing major maintenance schemes & hand/machine patching sites completed since 2014



Major maintenance completed since 2014

No	Location	Works
1	B3083 north junction A303 into The Common to junction with Maddington Street	Surface Dressing
2	Amesbury Road Shrewton east to Airmans Corner	Surface Dressing
3	London Road into The Packway to Rolleston Crossroads	Surface Dressing
4	B3086 Airmans Corner north to The Packway	Surface Dressing
5	High Street, Berwick St James	Resurfacing
6	Candown Road, Tilshead	Resurfacing
7	Church Street, Wylde	Resurfacing
8	Elston Lane, Maddington	Resurfacing
9	Imber Place	Resurfacing
10	Track Chitterne Down To Maddington Farm	Skid Resistance Improvements
11	Tidworth Road, Idmiston	Skid Resistance Improvements
12	A303 Winterbourne Stoke To Cherry Lodge	Skid Resistance Improvements
13	Tidworth Road, Allington	Skid Resistance Improvements
14	A338 at West Gomeldon	Skid Resistance Improvements
15	Portway, Winterbourne Dauntsey	Skid Resistance Improvements
16	B390 Chitterne Road, Shrewton	Skid Resistance Improvements
17	B390 Chitterne Road, Shrewton	Skid Resistance Improvements
18	The Packway, Larkhill	Skid Resistance Improvements
19	North of Stoford Bush Crossroads, Woodford	Skid Resistance Improvements
20	Unclassified road – Crossroad Amesbury Road to 30mph Cholderton	Skid Resistance Improvements
21	Imber Place	Skid Resistance Improvements

Amesbury Area Board Highway Information

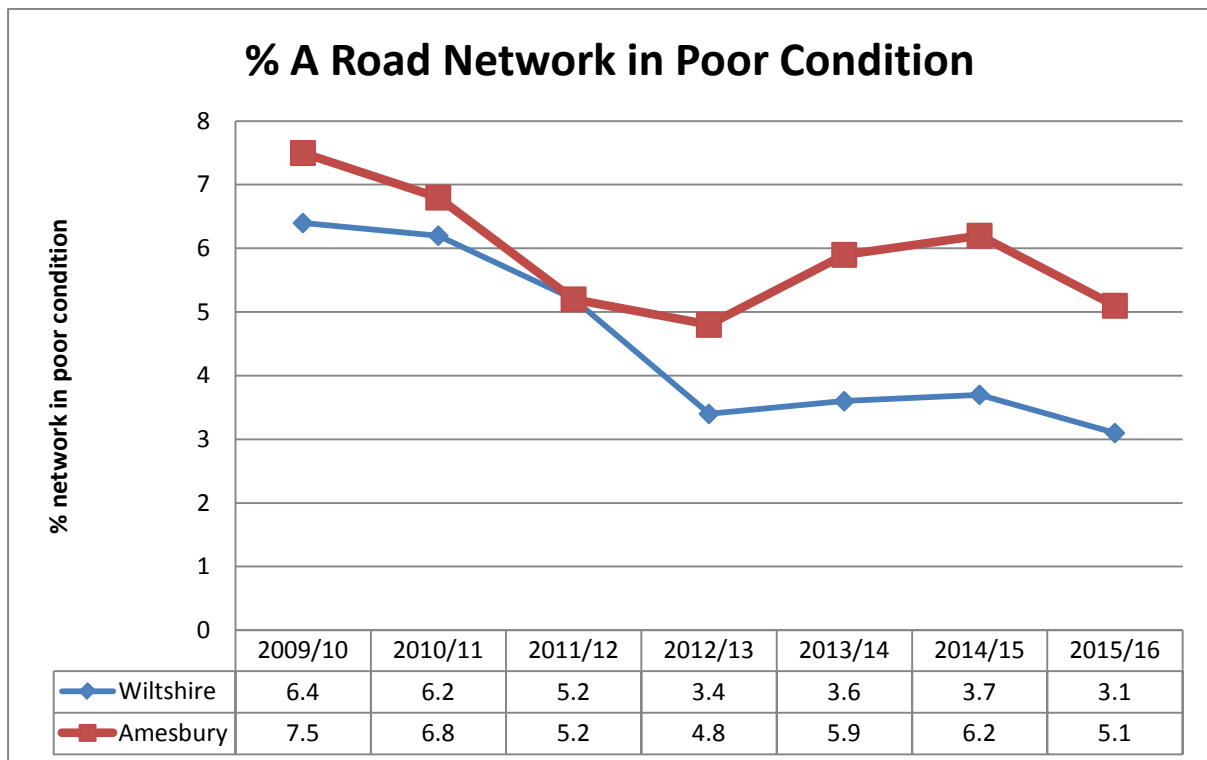
No	Location	Works
22	London Road into The Packway to Rolleston Crossroads	Resurfacing
23	A360 Shrewton - Tilshead	Resurfacing
24	C293, Allington	Surface Dressing
25	Wyndham Lane, Allington	Surface Dressing
26	C32 Milston Rd	Surface Dressing
27	A338 The Winterbournes	Skid Resistance Improvements
28	A338 The Winterbournes	Skid Resistance Improvements
29	A338 The Winterbournes	Skid Resistance Improvements
30	London Road, Winterslow	Skid Resistance Improvements
31	A345 Salisbury Road, Amesbury	Skid Resistance Improvements

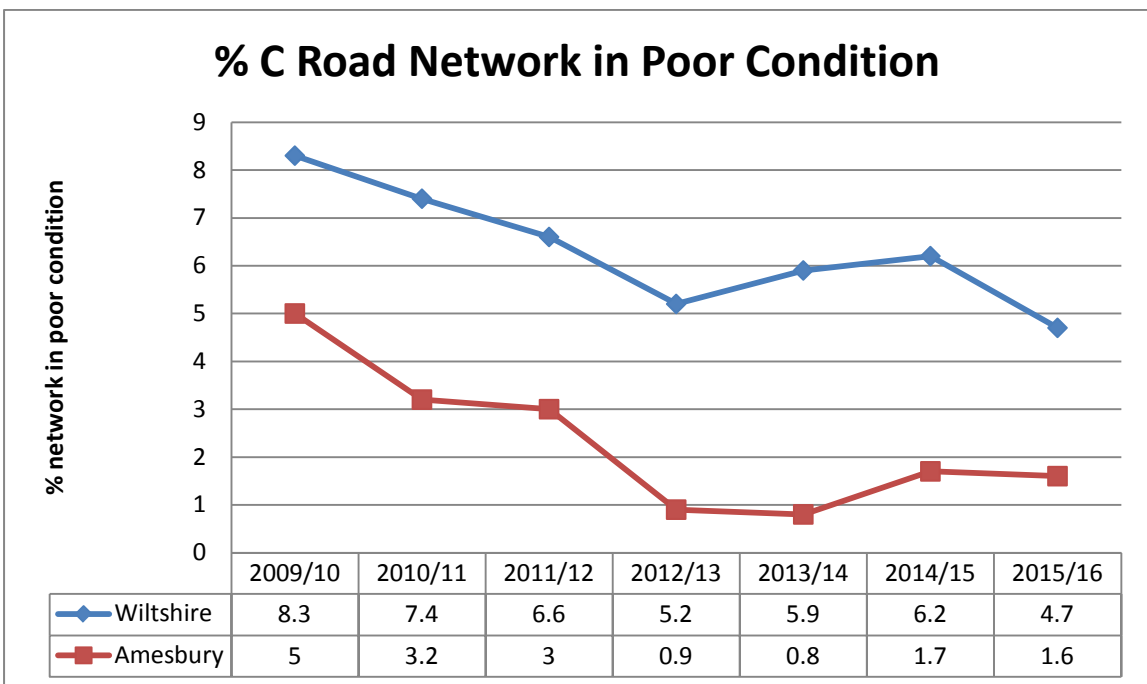
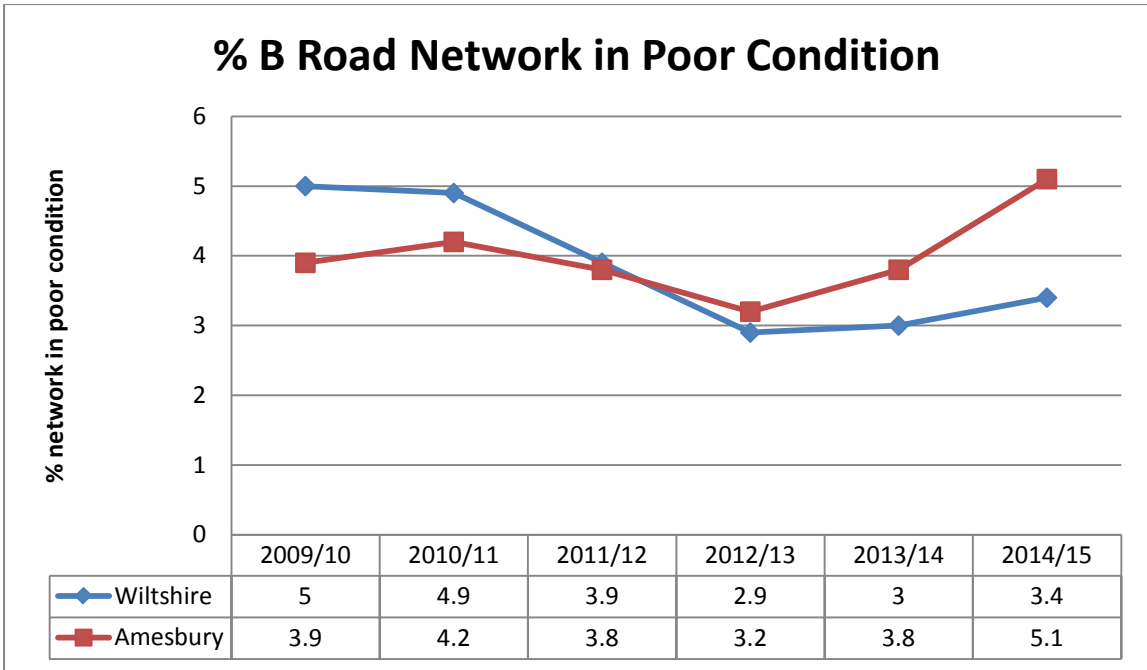
Highway conditions and technical surveys in your area

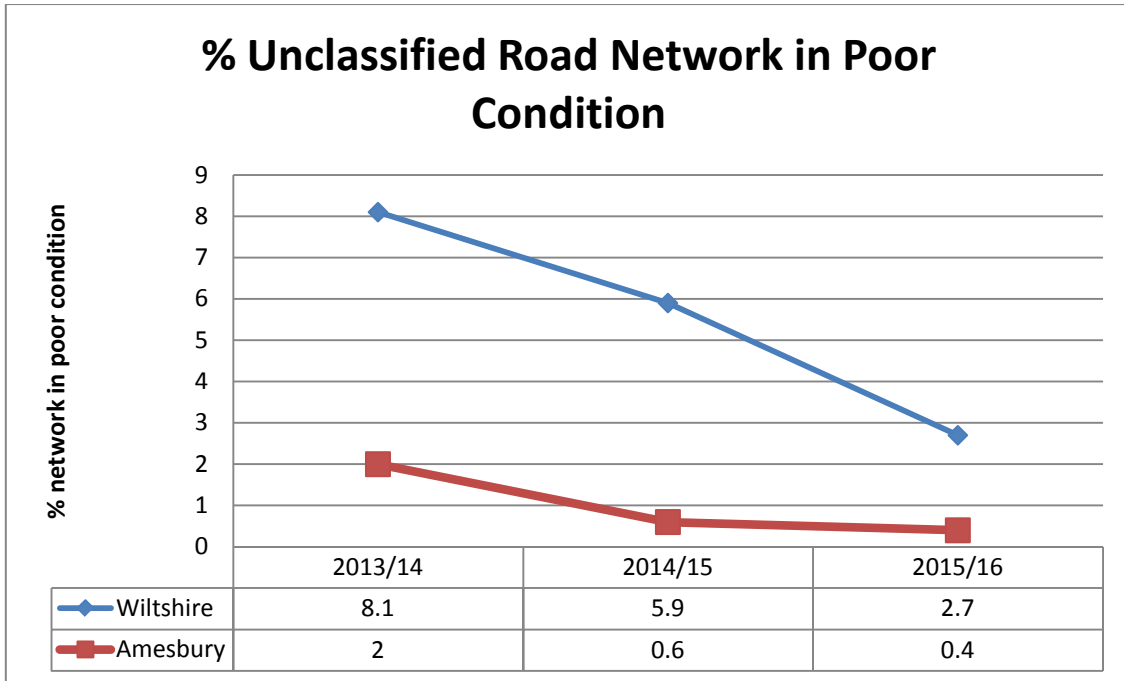
Roads deteriorate in condition because of various factors, including traffic volumes, ground conditions, and weather and drainage issues. Technical surveys of the condition of the highway network are carried out annually and the information is used to help prioritise schemes. Road safety is the priority, and maintaining adequate skid resistance on the busy high speed roads is vital.

The surveys include the use of a vehicle equipped with lasers and cameras to record road surface condition, which allows us to report on road conditions to the Department for Transport and to prioritise maintenance work. Other surveys include measuring skid resistance on the busier roads.

The road conditions in your area are shown below. It should be noted that low numbers are good because it indicates that less road length should be considered for treatment. More detailed information is shown in Appendix A.







Integrated transport, bridge and drainage works

Integrated transport

The Council's traffic engineering team work with our contractors to plan and deliver a range of projects to the local community, most notably through the Area Boards and Community Area Transport Groups (CATGs). The schemes range in size and complexity from simple sign installation through to more complex road safety and improvement schemes.

Bridges

The Council regularly inspects its bridges and other highway structures. There is a programme of renewal and refurbishment works to keep them in good condition, as well as having to respond to damage caused by collisions.

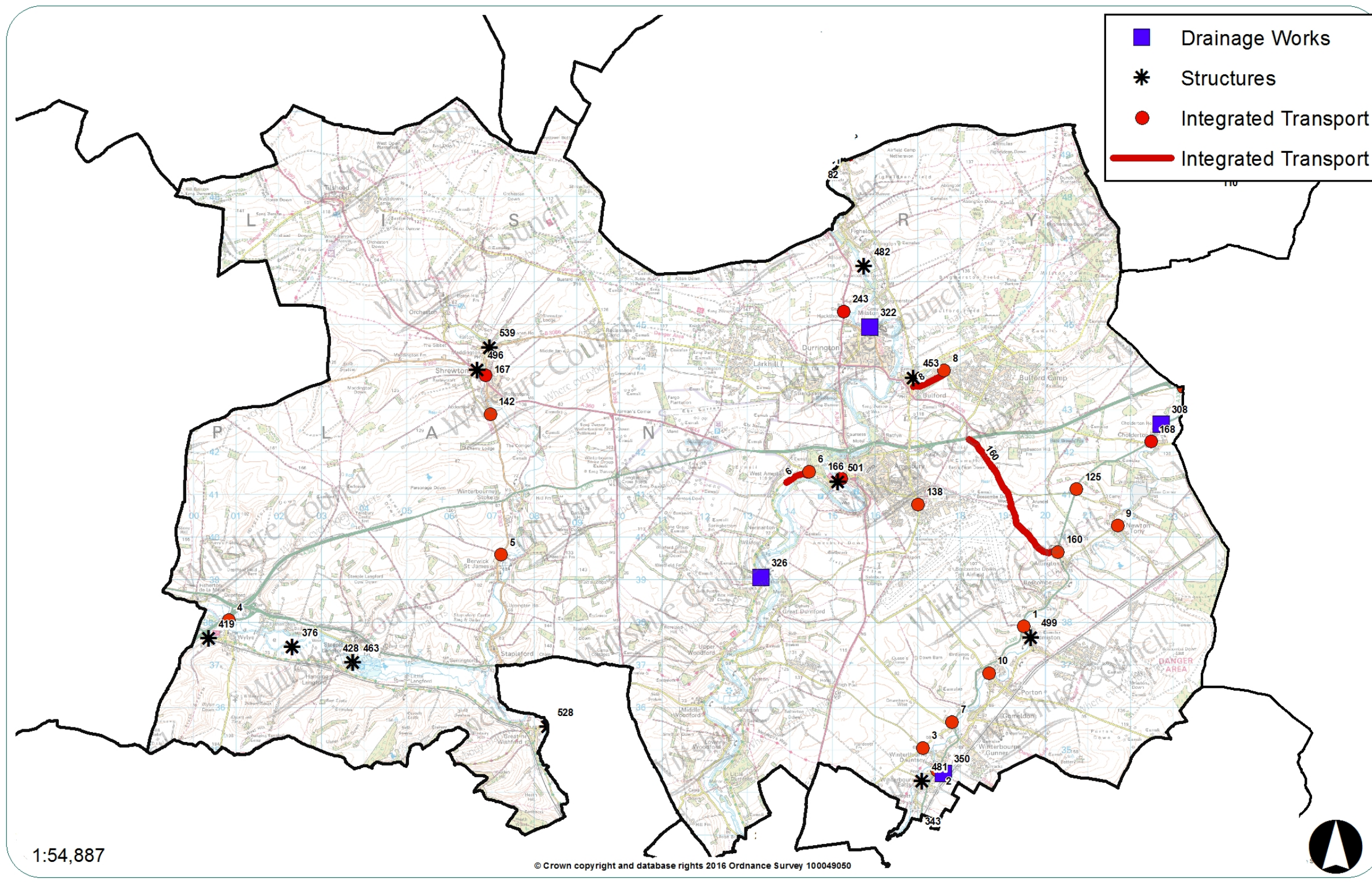
Drainage

Programmes of drainage investigations, repairs and flood alleviation schemes are undertaken throughout the year, but the flooding in recent years has meant that there has been a need to respond immediately to flooding issues, as well as dealing with previously identified problem sites. The drainage improvement and flood alleviation work is co-ordinated through the Council's Operational Flood Working Groups that include the Environment Agency, Wessex Water, other organisations and stakeholders.

Recent work in your area

The Integrated Transport, Bridge and Drainage schemes carried out in your area since 2015 are listed below.

Amesbury Area Board



Plan showing completed integrated transport, bridge and drainage schemes since 2015

Integrated transport schemes since 2015

No	Location	Description
1	A338 Idmiston /Church Road	Traffic Management
2	Winterbourne Earls	Winterbourne Earls Glebe Hall village signs
3	Winterbourne Gunner	Winterbourne Gunner, Gatters Lane / Portway junction
4	Highway Street, Wyle	Wylde High Street bollards
5	B3083 Berwick St James	Berwick St James, B3083 Review of speed limit signs
6	C42	C42 speed limit implementation
7	A338 West Gomeldon	West Gomeldon, A338 Portway footway
8	Churchill Avenue, Bulford	Bulford, Churchill Avenue 20mph speed limit
9	Newton Toney	Newton Toney, no through road sign
10	Winterslow Road, Porton	Porton, Winterslow Road footway
120	A338	A338 - Direction signs concerning Andover Business Park
125	A338, Newton Toney	A338 Newton Tony - relocate warning sign
138	Boscombe Down	Amesbury / Boscombe Down Main Road - warning signs and markings
142	B3083, Shrewton	B3083 Shrewton - speed limit terminal signs
160	Boscombe Down	Boscombe Down Allington Track / Winterslow Road - signs and markings
166	Amesbury	Amesbury Waiting Restrictions
167	Shrewton	Shrewton Parsons Green street nameplates
168	Cholderton	Cholderton Old Road/A338 hazard marker posts
243	A345 Netheravon Road	A345 Netheravon Road - Durrington - Path to Cemetery

Bridge schemes since 2014

No	Location	Description
376	Ballington Manor	Bridge Repair
419	Dyers Lane	Incursion Works
428	Steeple Langford Bridge.	Vegetation Works
453	Vicarage Bridge Bulford	Concrete Repair
463	Steeple Langford Bridge	Replacement
481	Drove Footbridge, Winterbourne	Deck Replacement Works
482	Gunville Hatches Footbridge	Deck Maintenance Works
496	A360 Shrewton Retaining Wall reconstruction	Partial Rebuild
499	Idmiston Bridge	Scour Protection
501	Queensbury Footbridge	Replacement Works
528	Great Wishford Bridge	Masonry Works
539	Laundry Bridge	Parapet Repair

Drainage works since 2015

No	Location	Description
308	Amesbury	Replacement of kerb drainage and barriers
322	Amesbury	New outfall across private gardens
326	Amesbury	Surface water drainage Scheme
350	Amesbury	Refurbishment of soakaway

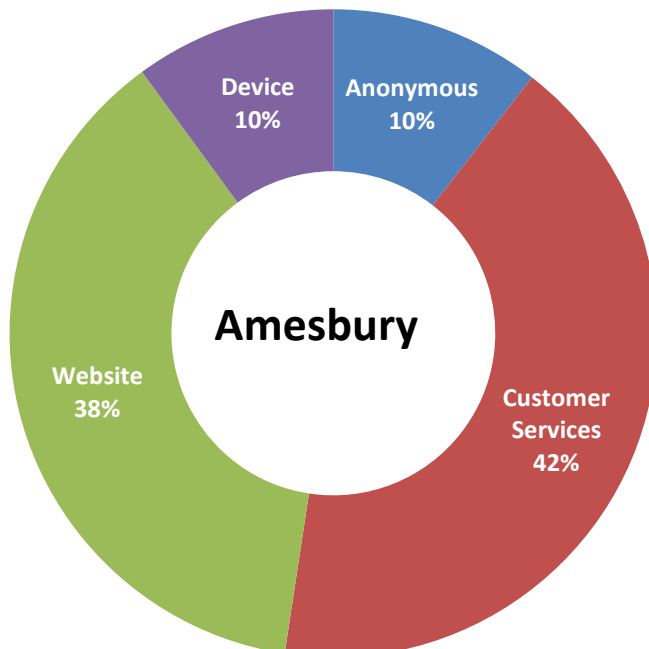
My Wiltshire



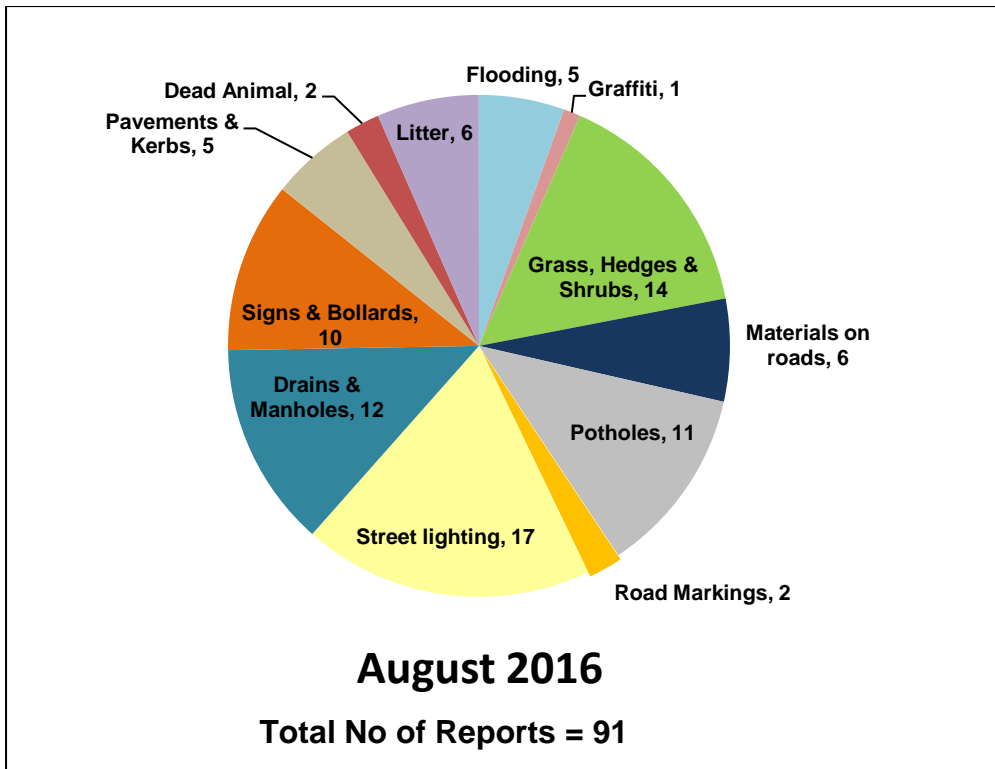
My Wiltshire provides an easy way to report highway issues, including using the Council's website. We have an app so you can report on the go using your smartphone. The My Wiltshire app is available to download at both the [App Store](#) (for iPhones and iPads), from [Google Play](#)[™] (for Android phones) and Windows Store. You can attach information such as photos or videos and pinpoint the location of your report using the mapping software on your phone.

A summary of recent reports in your area is shown below, and further details are shown in Appendix B.

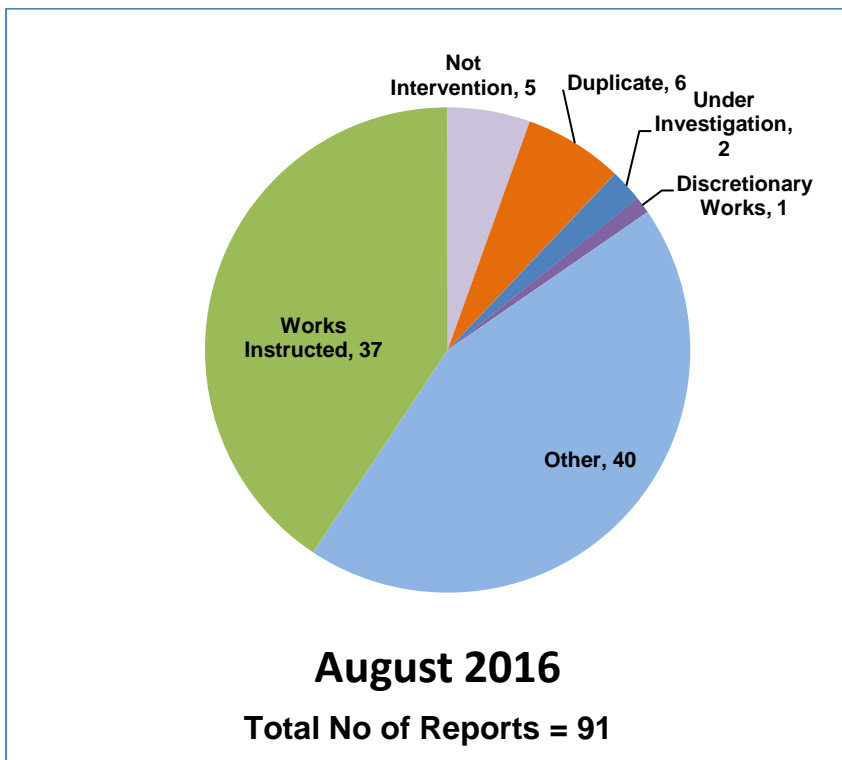
Customer reporting methods in your area



Customer reports in your area for the month of August 2016



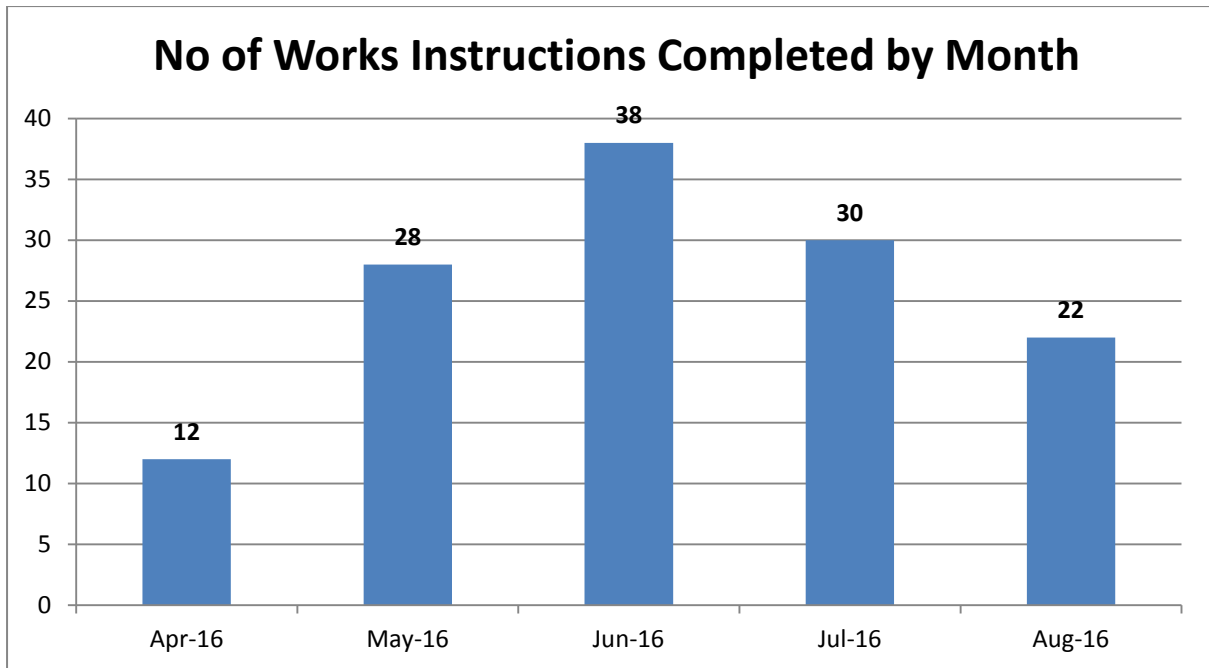
Actions following recent reports in your area



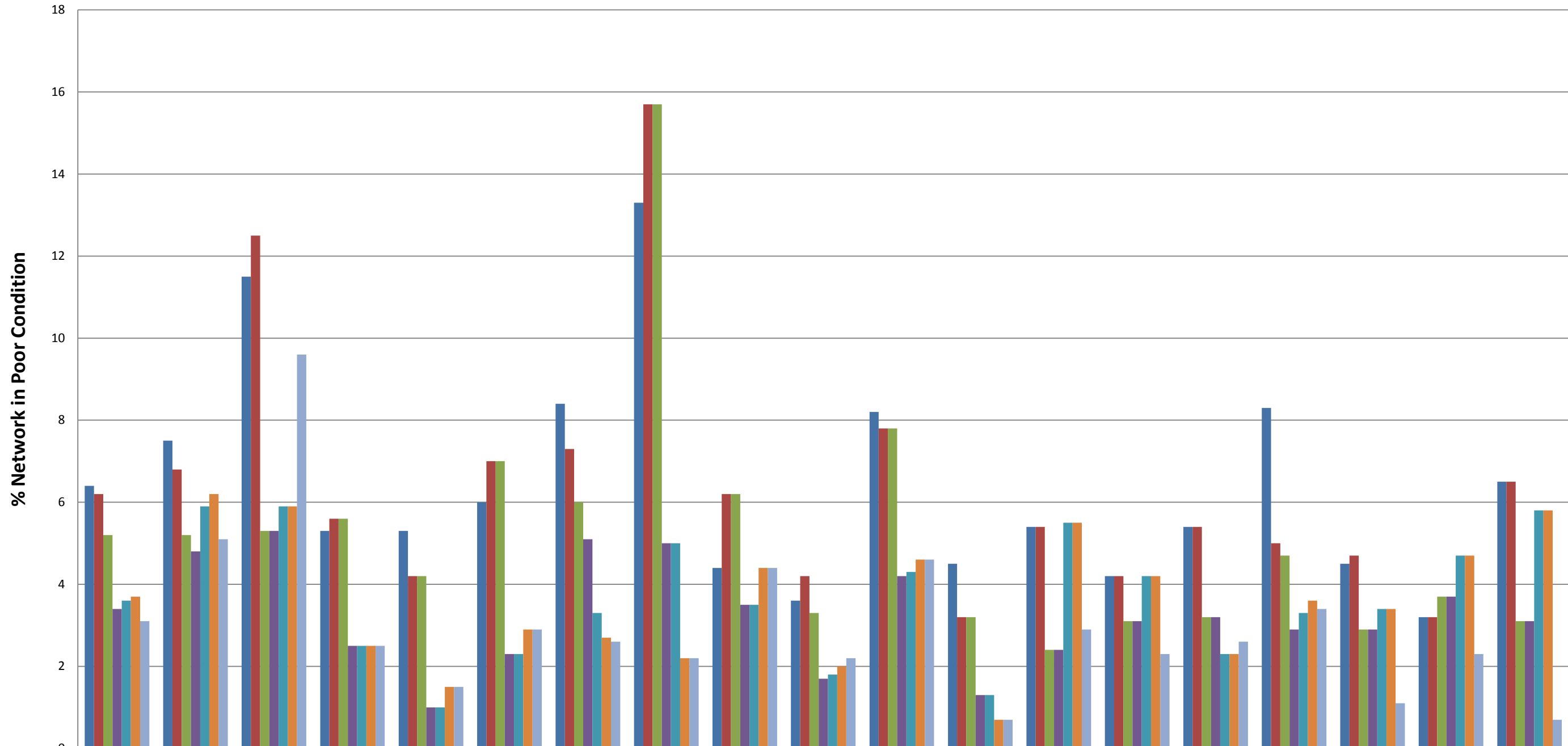
Action definitions

1. **Not Intervention** – the technician has attended site and classified the defect as not meeting intervention levels as per the Highway Inspection Manual 2013 or in the case of streetscene reports, service level agreements.
2. **Duplicate** – a report has already been received in relation to this issue and a works instruction has previously been passed to the contractor to undertake a repair/carry out the necessary works.
3. **Under Investigation** – this issue is currently with a Highways technician or engineer – they may be awaiting information from the customer or the issue requires further investigation e.g. wet weather inspection, drainage survey, exploratory excavation, ownership query.
4. **Discretionary works** – this issue is not a highway safety issue and has been identified as one which falls within the remit of the parish steward scheme.
5. **Other** – the issue has been identified as one which does not require any action by Local Highways. This could be for a number of reasons –
 - the report has been cancelled by the user,
 - there is insufficient information provided to assess the issue and the customer has not provided contact details,
 - the issue is not the responsibility of Wiltshire Council e.g. un-adopted highway, gas/electricity/telephone/water/cable company, Highways England, housing association,
 - the technician attended site and nothing was found at the stated location
 - the issue has been passed to another service within Wiltshire Council e.g. rights of way, bridges.
6. **Works Instructed** – the technician has assessed the issue as requiring works to be carried out and has either dealt with the issue personally or has referred it to the contractor for repair.

Highway defects completed in your area in recent months

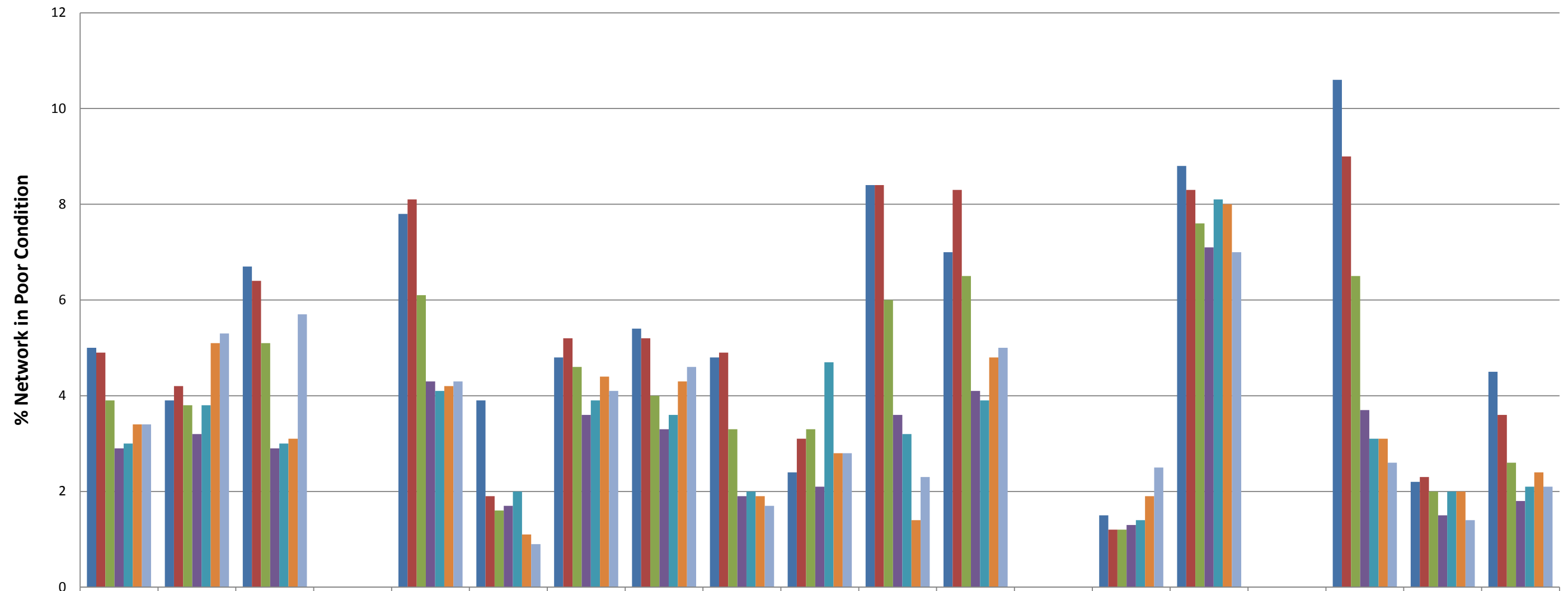


% A Road Network in Poor Condition



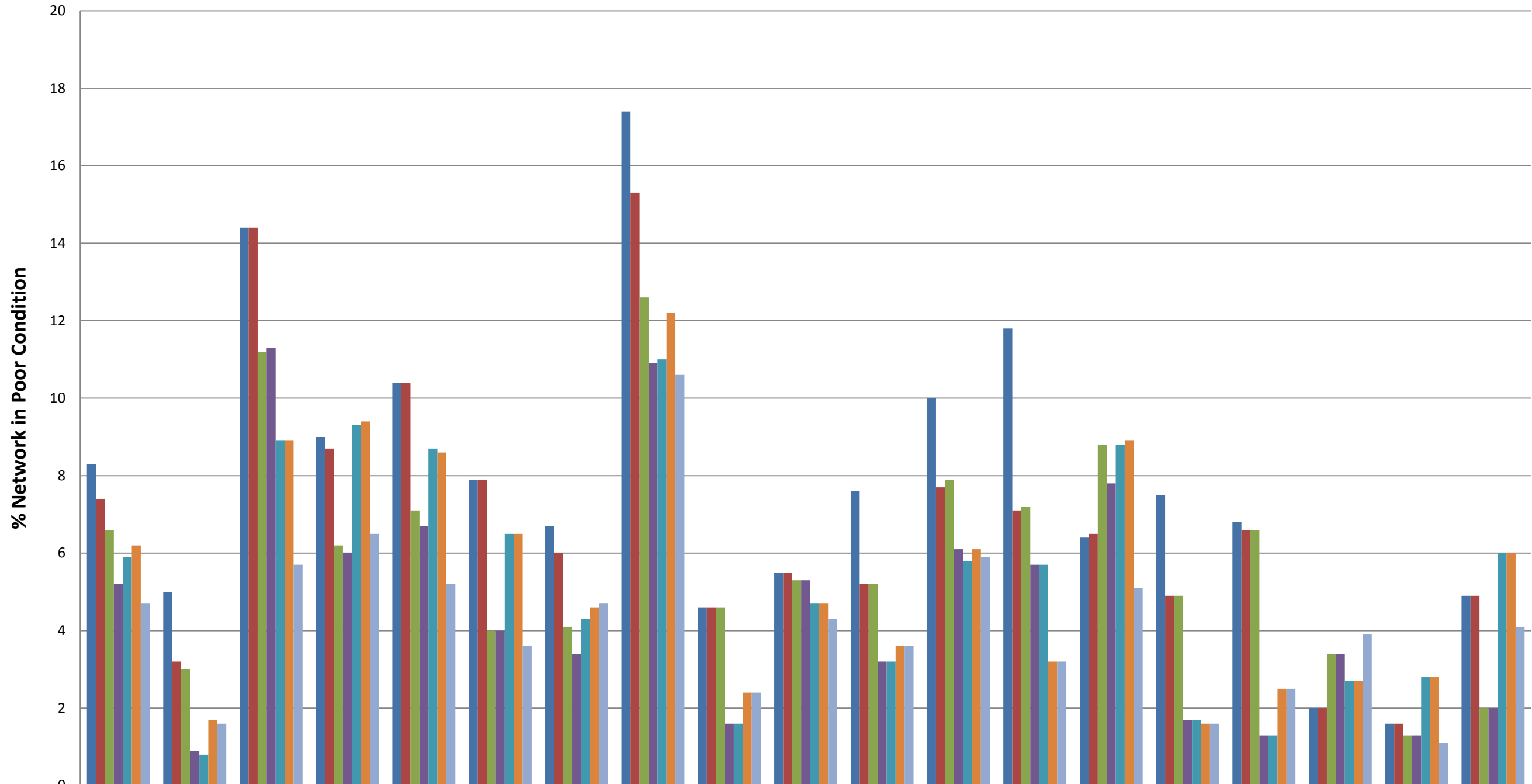
	Wiltshire	Amesbury	Bradford On Avon	Calne	Chippenham	Corsham	Devizes	Malmesbury	Marlborough	Melksham	Pewsey	Royal Wootton Bassett & Cricklade	Salisbury	South West Wiltshire	Southern Wiltshire	Tidworth	Trowbridge	Warminster	Westbury
■ 2009/10	6.4	7.5	11.5	5.3	5.3	6	8.4	13.3	4.4	3.6	8.2	4.5	5.4	4.2	5.4	8.3	4.5	3.2	6.5
■ 2010/11	6.2	6.8	12.5	5.6	4.2	7	7.3	15.7	6.2	4.2	7.8	3.2	5.4	4.2	5.4	5	4.7	3.2	6.5
■ 2011/12	5.2	5.2	5.3	5.6	4.2	7	6	15.7	6.2	3.3	7.8	3.2	2.4	3.1	3.2	4.7	2.9	3.7	3.1
■ 2012/13	3.4	4.8	5.3	2.5	1	2.3	5.1	5	3.5	1.7	4.2	1.3	2.4	3.1	3.2	2.9	2.9	3.7	3.1
■ 2013/14	3.6	5.9	5.9	2.5	1	2.3	3.3	5	3.5	1.8	4.3	1.3	5.5	4.2	2.3	3.3	3.4	4.7	5.8
■ 2014/15	3.7	6.2	5.9	2.5	1.5	2.9	2.7	2.2	4.4	2	4.6	0.7	5.5	4.2	2.3	3.6	3.4	4.7	5.8
■ 2015/16	3.1	5.1	9.6	2.5	1.5	2.9	2.6	2.2	4.4	2.2	4.6	0.7	2.9	2.3	2.6	3.4	1.1	2.3	0.7

% B Road Network in Poor Condition



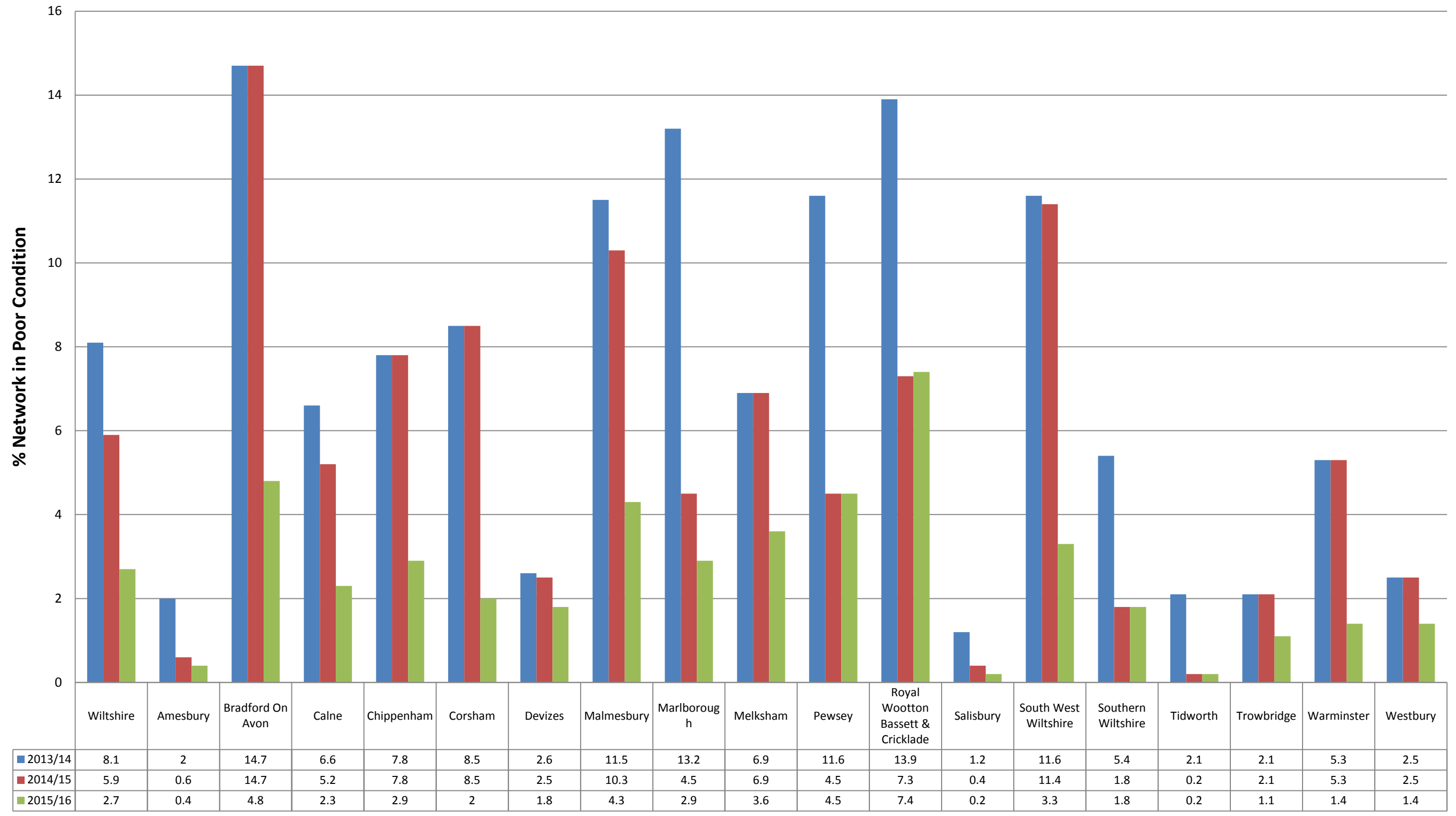
	Wiltshire	Amesbury	Bradford On Avon	Calne	Chippenham	Corsham	Devizes	Malmesbury	Marlborough	Melksham	Pewsey	Royal Wootton Bassett & Cricklade	Salisbury	South West Wiltshire	Southern Wiltshire	Tidworth	Trowbridge	Warminster	Westbury
2009/10	5	3.9	6.7	0	7.8	3.9	4.8	5.4	4.8	2.4	8.4	7	0	1.5	8.8	0	10.6	2.2	4.5
2010/11	4.9	4.2	6.4	0	8.1	1.9	5.2	5.2	4.9	3.1	8.4	8.3	0	1.2	8.3	0	9	2.3	3.6
2011/12	3.9	3.8	5.1	0	6.1	1.6	4.6	4	3.3	3.3	6	6.5	0	1.2	7.6	0	6.5	2	2.6
2012/13	2.9	3.2	2.9	0	4.3	1.7	3.6	3.3	1.9	2.1	3.6	4.1	0	1.3	7.1	0	3.7	1.5	1.8
2013/14	3	3.8	3	0	4.1	2	3.9	3.6	2	4.7	3.2	3.9	0	1.4	8.1	0	3.1	2	2.1
2014/15	3.4	5.1	3.1	0	4.2	1.1	4.4	4.3	1.9	2.8	1.4	4.8	0	1.9	8	0	3.1	2	2.4
2015/16	3.4	5.3	5.7	0	4.3	0.9	4.1	4.6	1.7	2.8	2.3	5	0	2.5	7	0	2.6	1.4	2.1

% C Road Network in Poor Condition



	Wiltshire	Amesbury	Bradford On Avon	Calne	Chippenham	Corsham	Devizes	Malmesbury	Marlborough	Melksham	Pewsey	Royal Wootton Bassett & Cricklade	Salisbury	South West Wiltshire	Southern Wiltshire	Tidworth	Trowbridge	Warminster	Westbury
2009/10	8.3	5	14.4	9	10.4	7.9	6.7	17.4	4.6	5.5	7.6	10	11.8	6.4	7.5	6.8	2	1.6	4.9
2010/11	7.4	3.2	14.4	8.7	10.4	7.9	6	15.3	4.6	5.5	5.2	7.7	7.1	6.5	4.9	6.6	2	1.6	4.9
2011/12	6.6	3	11.2	6.2	7.1	4	4.1	12.6	4.6	5.3	5.2	7.9	7.2	8.8	4.9	6.6	3.4	1.3	2
2012/13	5.2	0.9	11.3	6	6.7	4	3.4	10.9	1.6	5.3	3.2	6.1	5.7	7.8	1.7	1.3	3.4	1.3	2
2013/14	5.9	0.8	8.9	9.3	8.7	6.5	4.3	11	1.6	4.7	3.2	5.8	5.7	8.8	1.7	1.3	2.7	2.8	6
2014/15	6.2	1.7	8.9	9.4	8.6	6.5	4.6	12.2	2.4	4.7	3.6	6.1	3.2	8.9	1.6	2.5	2.7	2.8	6
2015/16	4.7	1.6	5.7	6.5	5.2	3.6	4.7	10.6	2.4	4.3	3.6	5.9	3.2	5.1	1.6	2.5	3.9	1.1	4.1

% Unclassified Road Network in Poor Condition



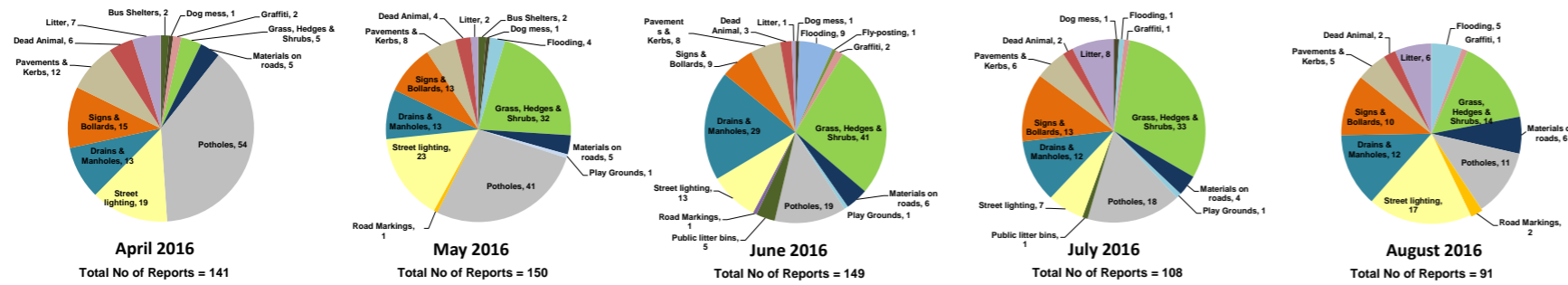
Appendix B: My Wiltshire Statistics



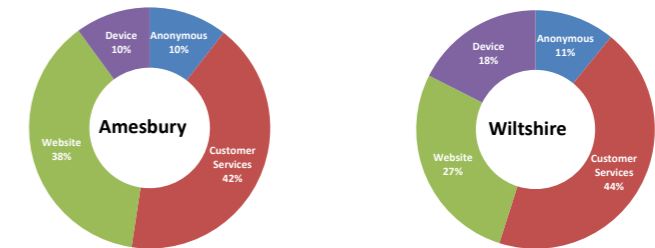
Amesbury Area Board



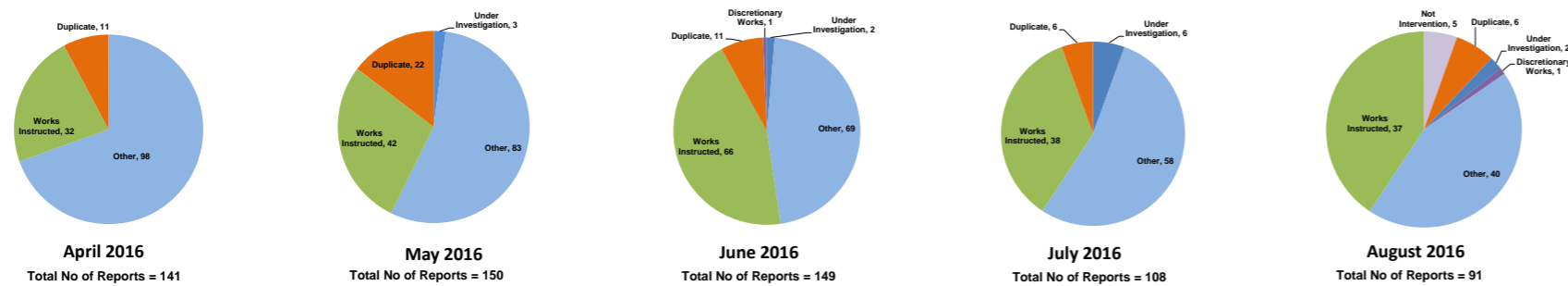
Customer Reported Issues



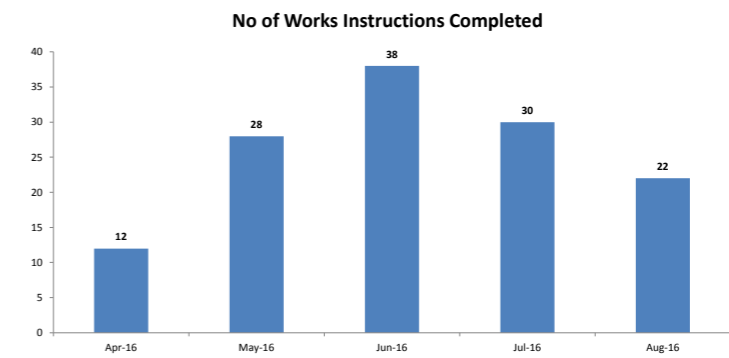
Reporting Channels



Customer Call Outcomes



Completed in Month



Safety Inspections

